

Scaled data based on original data using
LM-79-08 Approved Method: Electrical and Photometric Measurements of Solid-
State Lighting Products

Test Report Prepared for
Cooper Lighting Solutions
(formerly Eaton)

Brand: McGRAW-EDISON

Report Number: P#

Luminaire Tested: **ARCH4-110-AMB-U-T4W-PFS**

Issue Date: 12/16/2024

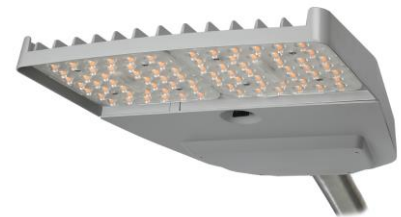
Test Information

Test Method: LM-79-08
Report Number: P#
TEST IS SCALED FROM IESNA LM-79-08 TEST DATA (G2-2406-129-12)
Test Lab: INNOVATION CENTER
Issue Date: 12/16/2024
Manufacturer: COOPER LIGHTING SOLUTIONS (FORMERLY EATON)
Product Line: McGRAW-EDISON
Catalog Number: ARCH4-110-AMB-U-T4W-PFS
Description: ARCHEON CONTEMPORARY ROADWAY AND AREA LUMINAIRE
(2) NARROW BAND AMBER, 600mA LIGHTSQUARES WITH 10 LEDS EACH AND TYPE IV
WIDE OPTICS WITH REAR PERIMETER FENCE SHIELD
Light Source: -
Ballast/Driver: -

Summary

Lumens per Lamp: N/A
Luminaire Lumens: 4385 lumens
Efficiency: N/A
Efficacy: 38.9 lumens/watt
Luminous Opening: Rectangular (W 1.17' x L: 0.58' x H: 0')
IES Classification: Type IV - Short
BUG Rating: B1 - U0 - G1

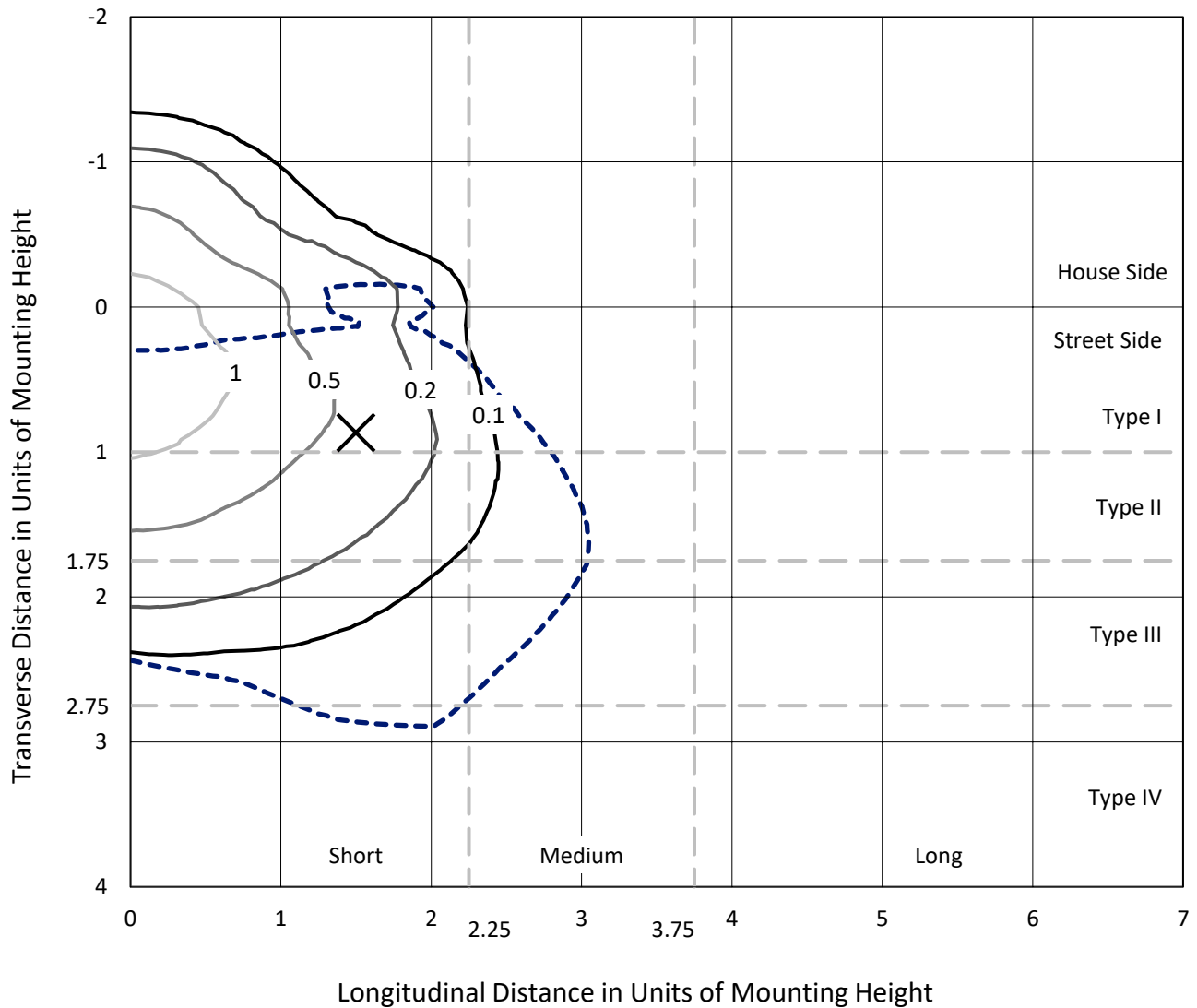
Input Watts (W): 112.6
Input Voltage (V): NR
Input Current (Ain): NR
Voltage Rise (V): NR
Power Factor: NR
Total Harmonic Distortion (THDi): NR
Frequency (hertz): 60
Stabilization Time: NR
Operation Time: NR
Ambient Temperature (°C): NR
Test Distance: 24 FT



REPORT NUMBER: P#
 CATALOG NUMBER: ARCH4-110-AMB-U-T4W-PFS

Iso-Footcandle Lines of Horizontal Illumination

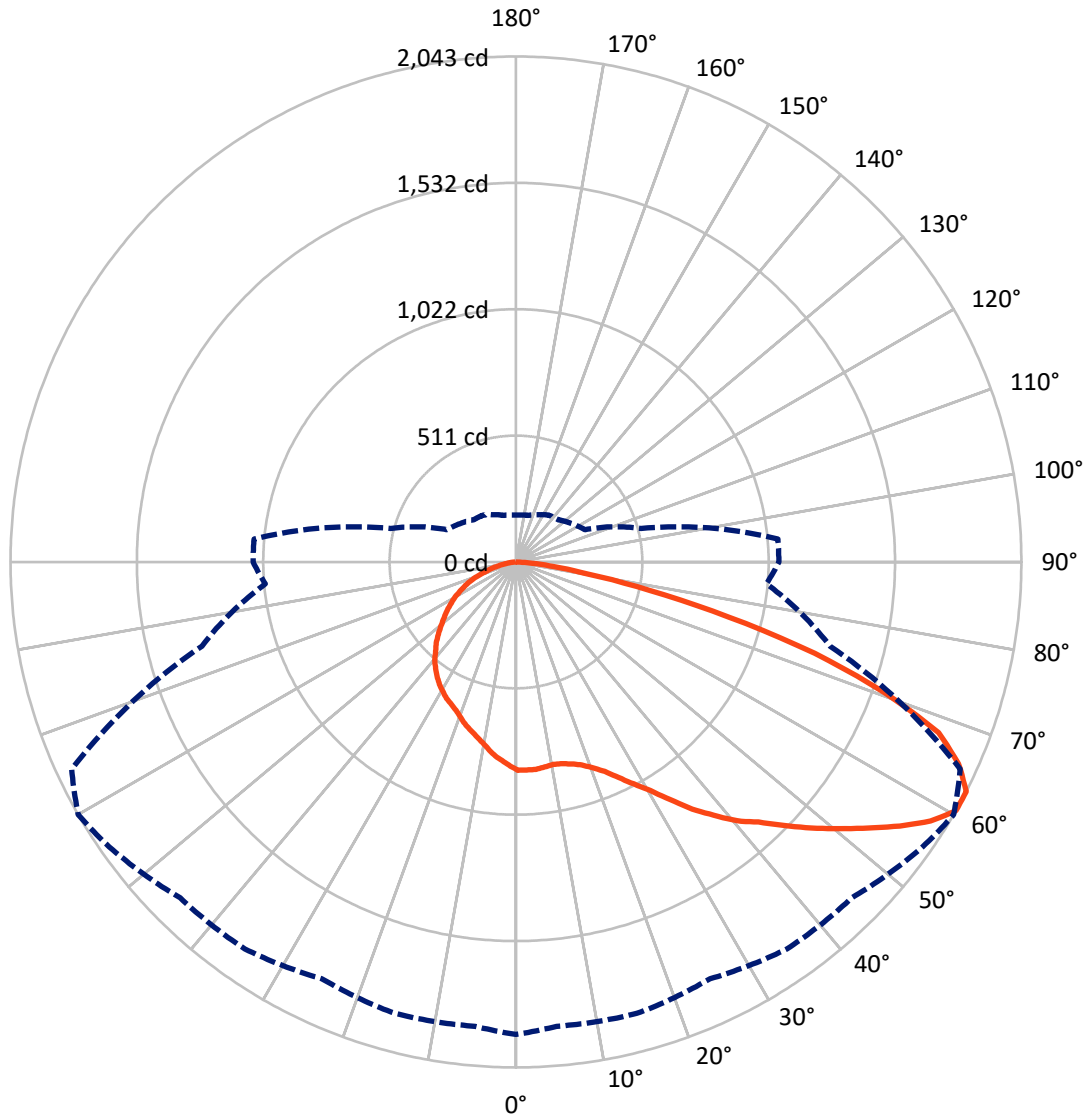
✕ Max cd
 - - - 1/2 Max cd



Based on 25 foot mounting height. Maximum calculated value = 1.4 fc
 Type IV - Short - N/A

REPORT NUMBER: P#
CATALOG NUMBER: ARCH4-110-AMB-U-T4W-PFS

Luminous Intensity Polar Plot



— Vertical Plane Through 60-Deg Lateral - - - Horizontal Cone Through 60-Deg Vertical

REPORT NUMBER: P#
 CATALOG NUMBER: ARCH4-110-AMB-U-T4W-PFS

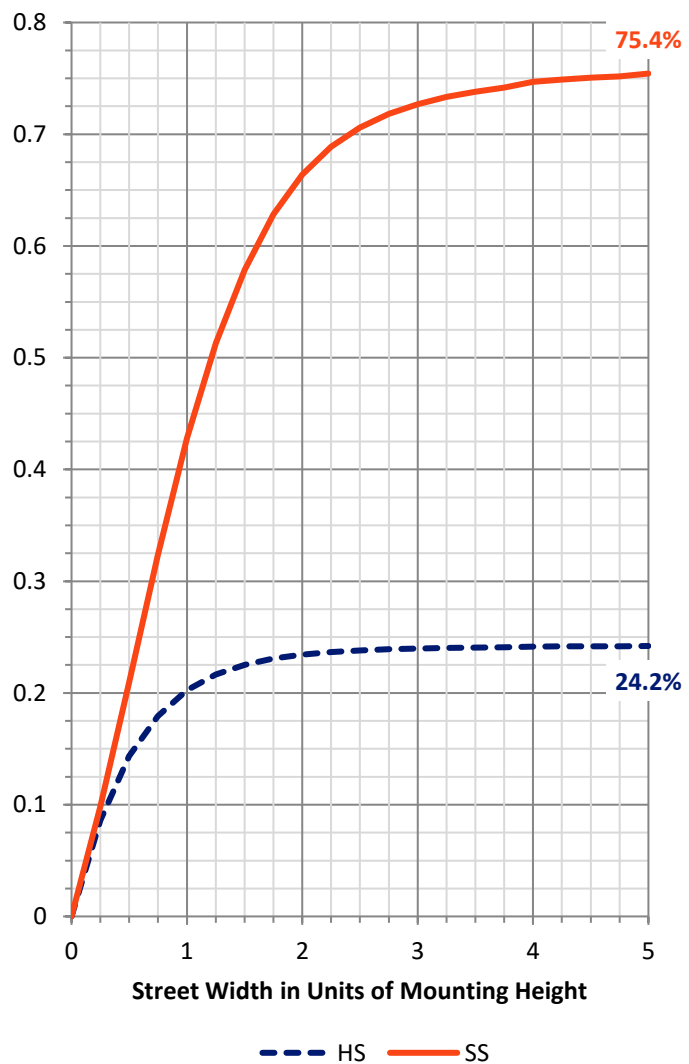
FLUX DISTRIBUTION:

		Downward	Upward	Total
House Side	Lumens	1068.1	0.0	1068.1
	% Fixture	24.4	0.0	24.4
Street Side	Lumens	3316.9	0.0	3316.9
	% Fixture	75.6	0.0	75.6
Total	Lumens	4385.0	0.0	4385.0
	% Fixture	100.0	0.0	100.0

ZONAL LUMENS:

Zone	Lumens	% Fixture
0°-10°	77.1	1.8
10°-20°	228.3	5.2
20°-30°	391.7	8.9
30°-40°	581.7	13.3
40°-50°	784.8	17.9
50°-60°	950.7	21.7
60°-70°	895.2	20.4
70°-80°	420.9	9.6
80°-90°	54.7	1.2
90°-100°	0.0	0.0
100°-110°	0.0	0.0
110°-120°	0.0	0.0
120°-130°	0.0	0.0
130°-140°	0.0	0.0
140°-150°	0.0	0.0
150°-160°	0.0	0.0
160°-170°	0.0	0.0
170°-180°	0.0	0.0
0°-90°	4385.0	100.0
0°-180°	4385.0	100.0

Coefficient of Utilization



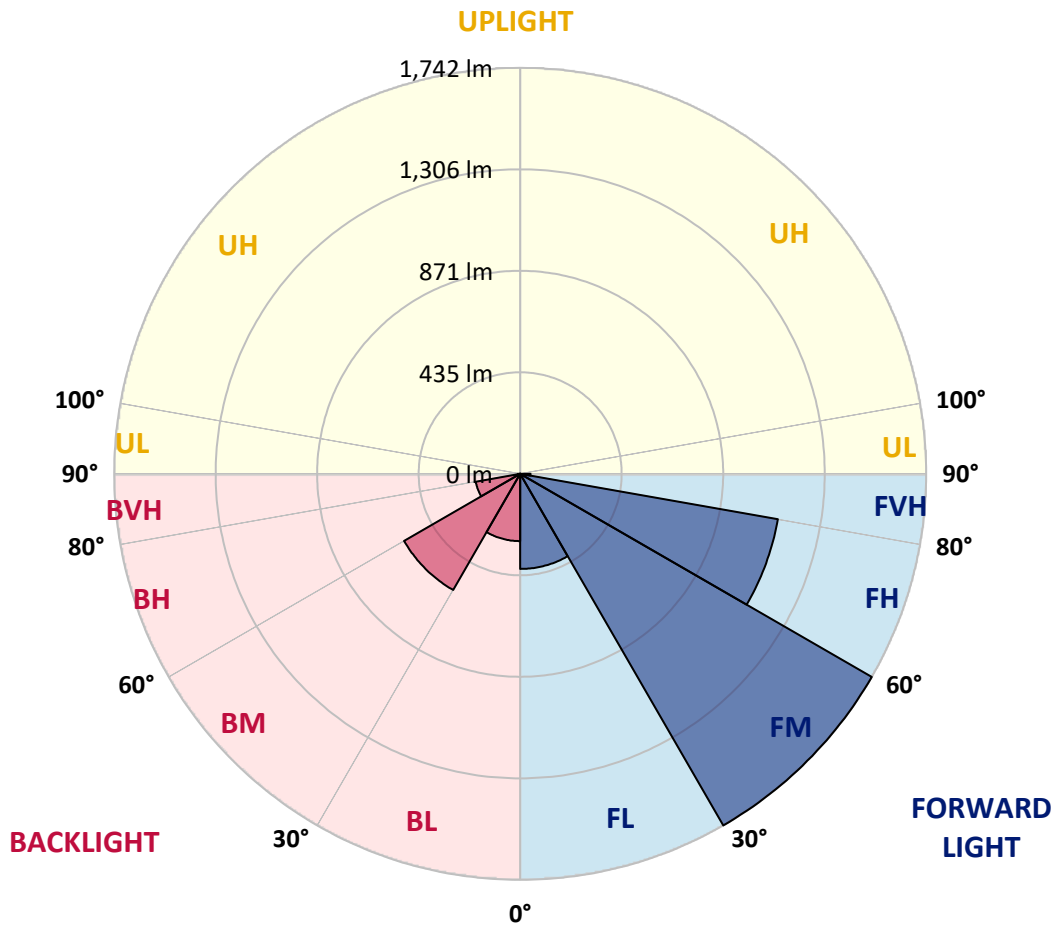
REPORT NUMBER: P#
 CATALOG NUMBER: ARCH4-110-AMB-U-T4W-PFS

LUMINAIRE CLASSIFICATION SYSTEM LUMEN TABLE AND BUG RATING:

Zone	Lumens	% Fixture	Zone Rating/Lumen Limit		
			B	U	G
FL (0°-30°)	408.2	9.3			
FM (30°-60°)	1741.8	39.7			
FH (60°-80°)	1122.6	25.6			G1/1800
FVH (80°-90°)	44.3	1.0			G1/100
BL (0°-30°)	288.8	6.6	B1/500		
BM (30°-60°)	575.4	13.1	B1/1000		
BH (60°-80°)	193.5	4.4	B1/500		G1/500
BVH (80°-90°)	10.4	0.2			G1/100
UL (90°-100°)	0.0	0.0		U0/0	
UH (100°-180°)	0.0	0.0		U0/0	

BUG Rating: B1-U0-G1

Type IV Short



REPORT NUMBER: P#
 CATALOG NUMBER: ARCH4-110-AMB-U-T4W-PFS

CANDELA DISTRIBUTION (FULL):

	0°	5°	15°	25°	35°	45°	55°	60°	65°	75°	85°
0°	841.8	841.8	841.8	841.8	841.8	841.8	841.8	841.8	841.8	841.8	841.8
2.5°	847.0	847.0	847.0	847.0	847.0	841.8	841.8	841.8	836.7	836.7	836.7
5°	841.8	847.0	847.0	847.0	847.0	841.8	841.8	841.8	836.7	836.7	831.6
7.5°	852.1	852.1	852.1	847.0	847.0	836.7	836.7	836.7	831.6	831.6	831.6
10°	877.8	877.8	872.6	862.4	857.2	841.8	831.6	831.6	826.4	826.4	821.3
12.5°	929.1	929.1	913.7	903.4	882.9	857.2	841.8	836.7	826.4	826.4	816.2
15°	995.8	995.8	980.4	959.9	929.1	888.0	857.2	847.0	831.6	826.4	821.3
17.5°	1052.3	1062.5	1042.0	1021.5	985.5	934.2	882.9	862.4	841.8	831.6	821.3
20°	1093.3	1103.6	1088.2	1072.8	1036.9	980.4	913.7	888.0	857.2	831.6	821.3
22.5°	1113.9	1119.0	1113.9	1103.6	1083.1	1031.7	954.7	918.8	882.9	841.8	826.4
25°	1134.4	1144.7	1134.4	1124.1	1119.0	1077.9	1006.1	965.0	913.7	852.1	831.6
27.5°	1190.9	1196.0	1180.6	1160.1	1154.9	1129.3	1062.5	1016.3	954.7	872.6	841.8
30°	1288.4	1288.4	1267.9	1216.5	1190.9	1170.3	1124.1	1072.8	1000.9	893.1	852.1
32.5°	1411.6	1416.7	1385.9	1308.9	1252.5	1231.9	1190.9	1144.7	1062.5	918.8	862.4
35°	1529.6	1534.8	1504.0	1406.5	1339.7	1298.7	1273.0	1226.8	1129.3	949.6	872.6
37.5°	1632.3	1632.3	1601.5	1498.8	1432.1	1365.4	1344.9	1298.7	1185.7	965.0	877.8
40°	1729.8	1724.7	1683.6	1565.6	1519.4	1437.3	1411.6	1375.7	1262.7	1000.9	893.1
42.5°	1791.4	1770.9	1735.0	1622.0	1586.1	1519.4	1473.2	1437.3	1344.9	1036.9	903.4
45°	1873.6	1832.5	1776.0	1688.8	1647.7	1601.5	1545.0	1519.4	1421.9	1077.9	923.9
47.5°	1894.1	1847.9	1812.0	1765.8	1704.2	1673.4	1616.9	1606.6	1504.0	1124.1	939.3
50°	1899.2	1863.3	1863.3	1796.6	1760.6	1724.7	1704.2	1693.9	1591.2	1165.2	959.9
52.5°	1868.4	1873.6	1889.0	1822.2	1817.1	1786.3	1791.4	1786.3	1683.6	1206.3	980.4
55°	1914.6	1924.9	1924.9	1847.9	1868.4	1842.8	1873.6	1883.8	1786.3	1257.6	1000.9
57.5°	1955.7	1955.7	1955.7	1894.1	1914.6	1894.1	1955.7	1976.2	1894.1	1293.5	1016.3
60°	1909.5	1883.8	1889.0	1858.2	1909.5	1919.8	2007.0	2043.0	1981.4	1314.1	1016.3
62.5°	1704.2	1714.4	1724.7	1724.7	1832.5	1889.0	1991.6	2043.0	2007.0	1314.1	995.8
65°	1401.3	1447.5	1488.6	1591.2	1699.0	1832.5	1919.8	1966.0	1945.4	1273.0	949.6
67.5°	1031.7	1093.3	1201.1	1421.9	1570.7	1719.6	1832.5	1842.8	1770.9	1124.1	811.0
70°	764.8	816.2	959.9	1211.4	1391.1	1498.8	1658.0	1581.0	1447.5	923.9	651.9
72.5°	528.7	564.6	739.2	1000.9	1190.9	1216.5	1314.1	1262.7	1108.7	718.6	518.4
75°	338.8	364.4	503.0	749.4	939.3	898.3	872.6	888.0	821.3	554.4	390.1
77.5°	220.7	236.1	308.0	467.1	605.7	610.8	539.0	549.2	549.2	395.2	292.6
80°	133.5	143.7	189.9	266.9	308.0	364.4	318.2	292.6	282.3	246.4	200.2
82.5°	66.7	71.9	102.7	143.7	148.9	159.1	159.1	154.0	148.9	148.9	133.5
85°	20.5	20.5	30.8	46.2	46.2	56.5	71.9	66.7	66.7	71.9	71.9
87.5°	5.1	5.1	5.1	5.1	5.1	5.1	10.3	15.4	15.4	15.4	15.4
90°	0.0	0.0	0.0	0.0	0.0	0.0	0.0	0.0	0.0	0.0	0.0

REPORT NUMBER: P#
 CATALOG NUMBER: ARCH4-110-AMB-U-T4W-PFS

CANDELA DISTRIBUTION (continued):

	90°	95°	105°	115°	125°	135°	145°	155°	165°	175°	180°
0°	841.8	841.8	841.8	841.8	841.8	841.8	841.8	841.8	841.8	841.8	841.8
2.5°	836.7	831.6	826.4	821.3	821.3	821.3	811.0	811.0	811.0	811.0	811.0
5°	831.6	826.4	821.3	805.9	795.6	790.5	780.2	775.1	770.0	764.8	764.8
7.5°	826.4	821.3	805.9	790.5	770.0	754.6	734.0	728.9	723.8	718.6	718.6
10°	821.3	811.0	795.6	764.8	739.2	718.6	698.1	687.8	682.7	682.7	682.7
12.5°	816.2	805.9	780.2	744.3	713.5	687.8	672.4	667.3	667.3	667.3	667.3
15°	816.2	805.9	770.0	728.9	687.8	667.3	657.0	662.2	662.2	667.3	667.3
17.5°	816.2	800.8	759.7	708.4	672.4	657.0	651.9	657.0	667.3	672.4	672.4
20°	816.2	800.8	749.4	682.7	651.9	641.6	646.8	657.0	667.3	672.4	672.4
22.5°	821.3	805.9	739.2	662.2	631.4	631.4	641.6	651.9	651.9	662.2	662.2
25°	826.4	805.9	728.9	646.8	616.0	616.0	626.2	631.4	631.4	636.5	641.6
27.5°	836.7	811.0	723.8	636.5	600.6	600.6	600.6	610.8	616.0	621.1	626.2
30°	847.0	821.3	723.8	621.1	580.0	569.8	574.9	585.2	590.3	600.6	605.7
32.5°	857.2	831.6	718.6	605.7	559.5	539.0	544.1	559.5	569.8	580.0	585.2
35°	862.4	841.8	718.6	590.3	533.8	503.0	508.2	533.8	544.1	554.4	559.5
37.5°	877.8	862.4	728.9	574.9	503.0	467.1	482.5	513.3	518.4	523.6	528.7
40°	898.3	888.0	734.0	559.5	472.2	436.3	451.7	482.5	497.9	503.0	508.2
42.5°	913.7	913.7	739.2	533.8	436.3	410.6	426.0	462.0	477.4	477.4	482.5
45°	939.3	944.5	744.3	508.2	410.6	390.1	400.4	436.3	446.6	446.6	446.6
47.5°	965.0	975.3	739.2	472.2	385.0	369.6	379.8	405.5	410.6	410.6	410.6
50°	990.7	1006.1	718.6	436.3	359.3	354.2	349.0	359.3	354.2	354.2	354.2
52.5°	1016.3	1042.0	687.8	400.4	338.8	328.5	318.2	313.1	308.0	297.7	302.8
55°	1047.1	1062.5	646.8	369.6	318.2	302.8	282.3	272.1	261.8	261.8	261.8
57.5°	1062.5	1072.8	590.3	338.8	292.6	272.1	251.5	241.3	231.0	225.9	225.9
60°	1062.5	1062.5	523.6	308.0	272.1	241.3	231.0	210.5	195.1	189.9	189.9
62.5°	1047.1	1026.6	446.6	277.2	241.3	215.6	205.3	179.7	159.1	154.0	148.9
65°	985.5	923.9	374.7	251.5	210.5	195.1	174.5	154.0	128.3	123.2	118.1
67.5°	826.4	713.5	308.0	220.7	184.8	164.3	148.9	123.2	102.7	97.5	97.5
70°	651.9	528.7	246.4	179.7	159.1	133.5	123.2	92.4	66.7	61.6	56.5
72.5°	497.9	390.1	200.2	143.7	123.2	102.7	87.3	66.7	46.2	35.9	35.9
75°	379.8	292.6	169.4	118.1	97.5	66.7	66.7	51.3	30.8	25.7	25.7
77.5°	282.3	220.7	133.5	92.4	61.6	51.3	41.1	35.9	15.4	5.1	5.1
80°	184.8	148.9	92.4	61.6	41.1	30.8	20.5	20.5	5.1	0.0	0.0
82.5°	128.3	97.5	61.6	41.1	25.7	15.4	15.4	10.3	5.1	0.0	0.0
85°	71.9	51.3	35.9	20.5	15.4	10.3	5.1	5.1	0.0	0.0	0.0
87.5°	15.4	10.3	10.3	10.3	5.1	5.1	5.1	0.0	0.0	0.0	0.0
90°	0.0	0.0	0.0	0.0	0.0	0.0	0.0	0.0	0.0	0.0	0.0

(END OF REPORT)